

# TEXWRAP<sup>®</sup>

# 2203

MADE IN U.S.A.

## HORIZONTAL SIDE SEALER

### Features, Functions & Benefits

- 10.5" cross seal height opening
- Touchscreen controlled autotune heaters
- Film centerfolder with lay-on cradle
- 54" SW and 24"CF film capacity
- Autospacing for control of randomly spaced, choke fed, or multipack products
- MOTION TRIM™ for increased speeds
- Allen Bradley PLC control
- Adjustable film inverting head with controlled air bearing surfaces for reduced film drag
- Horizontal and vertical photo eye controlled cross seal system to provide automatic adjustment of bag length
- Variable speed control with maximum belt speed of 100 FPM
- Automatic speed maximizer (automatically brings machine up to top speed for a given set up)
- Enhanced sealing performance for tall packages
- AC inverter duty motor with sensorless vector AC drives
- Improved transfer conveyors



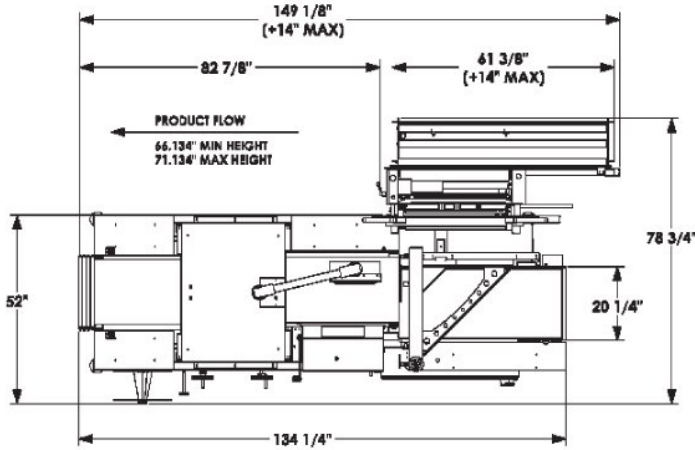
# AVERO

## PACKAGING CORPORATION

*Flexible Packaging – Machinery & Materials*

# 800-946-2837





SPECIFICATIONS	2203
MAXIMUM PKG SIZE	Infinite L x 20"W x 10"H
MINIMUM PKG SIZE	4"L x 2"W
MAXIMUM FILM SPEED	100 FPM
CONVEYOR HEIGHT	Adj from 32.5" to 37.5"H
FILM WIDTH	54" SW or 27" CF
ELECTRICAL	240/208V, 20/23 amp, 1 phase
AIR REQUIREMENTS	80 PSI
MACHINE CONTROLS	Allen Bradley

### Standard Features:

**Stainless Infeed**

Stainless Steel Chain Infeed is removable for cleaning.

**Strap Belt Infeed**

A film saving infeed option.

**Film Splicing**

Stainless Steel Chain Infeed is removable for cleaning.

**MSRS Seal System**

Seal system specially designed for heavy specialty films.

**DRS Seal System**

Seal system is low maintenance with no rubber backup roller.

### ADD OTHER TEXWRAP EQUIPMENT FOR A COMPLETE SYSTEM:

INFEEDS:	Belted Conveyor	Flighted Conveyor	Flightbar Conveyor
Texwrap produces a full range of infeed conveyors from simple belt, lug, and flight bar to Servo placement systems that will enhance the operation of the wrapper.			
TUNNELS:	Single Tunnel	Double Tunnel	Tunnel Window
Cool-Touch insulated Texwrap Tunnels offer the proper balance between cost, versatility and durability. These tunnels are designed for multiple shifts 24/7 operation. Optional lighted window on all models.			

V1.1

\*Specifications on all machines subject to change without notice. Some information may have been updated since the time of publication.